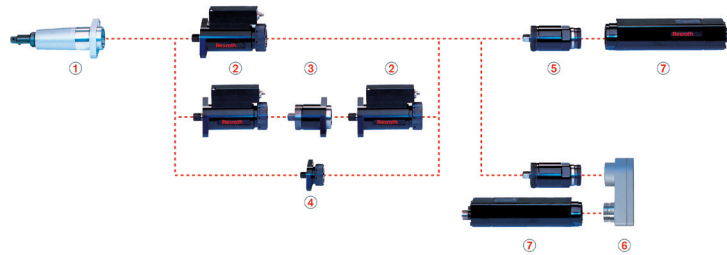


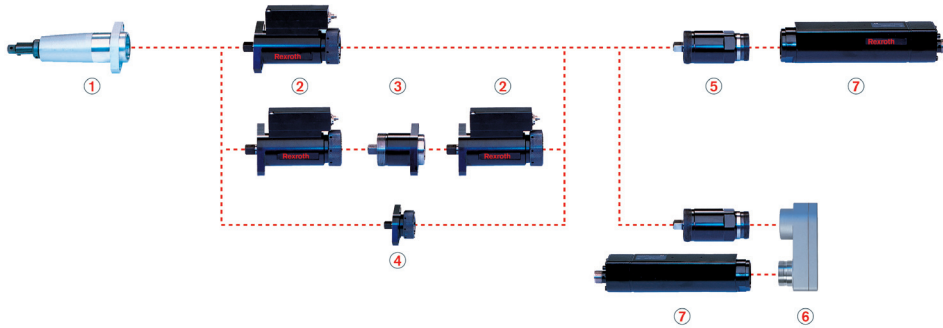
Spindle Bearing
6 - 150 Nm
Size 4



Spindle Bearing

6 - 150 Nm ■ Size 4

Documentation
• outputs
• Tightening spindles
• Gearboxes
• EC motor



Benefits:

- Various lengths with axial compensator
- Standard tool mounts
- Maximum efficiency
- Easy assembly due to flange connection
- Maintenance-free for 1 million full load cycles

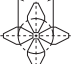
Technical data

Spindle Bearing

6 - 150 Nm ■ Size 4

Tightening spindle		Spindle bearing				Tightening spindles		PC-based		Tightening spindles	
		Range of spring	Tool mount	Code	Order no.	Code	Order no.	Code	Order no.	Code	Order no.
[Nm]	[l/m]	[mm]									
6 - 56	1000	25	1/2" square		0608800031	4DMC060	0608820114	4GE19	0608720056	EC304	0608701018
		25	1/4" quick-change chuck		0608800020						
		25	1/2" square with centering pin		0608800001						
		50	1/2" square		0608800006						
		50	1/4" quick-change chuck		0608800008						
		50	1/2" square with centering pin		0608800021						
		50	1/2" square		0608800056						
		50	1/4" quick-change chuck		0608800057						
		50	1/2" square with centering pin		0608800027						
	340	25	1/2" square		0608800031						
		25	1/4" quick-change chuck		0608800020						
		25	1/2" square with centering pin		0608800001						
		50	1/2" square		0608800006						
		50	1/4" quick-change chuck		0608800008						
		50	1/2" square with centering pin		0608800021						
		50	1/2" square		0608800056						
		50	1/4" quick-change chuck		0608800057						
		50	1/2" square with centering pin		0608800027						
15 - 150	340	25	1/2" square		0608800031	4DMC160	0608820115	4GE59	0608720040	EC304	0608701018
		25	1/4" quick-change chuck		0608800020						
		25	1/2" square with centering pin		0608800001						
		50	1/2" square		0608800006						
		50	1/4" quick-change chuck		0608800008						
		50	1/2" square with centering pin		0608800021						
		50	1/2" square		0608800056						
		50	1/4" quick-change chuck		0608800057						
		50	1/2" square with centering pin		0608800027						

Side-by-side arrangement of tightening spindles (center-to-center distance)

	Number of tightening spindles	2	3	4	5	6
		Smallest circle diameter \varnothing dmin [mm]	59	83.5	83.5	83.5

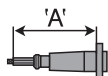
Spindle Bearing

6 - 150 Nm ■ Size 4

Accuracy is limited if operating below the working range.

Components

1) Spindle Bearing



Code					
Order no.					
Maximum torque	[Nm]	150			
Reduction		1			
Avg. efficiency		1			
Length A	[mm]	156	181	251	319
Installation Length	[mm]	170	195	265	333
Weight	[kg]	0.9 kg	1 kg		

- You can configure your tightening spindle with a redundant measurement transducer from the same type. Connect both measurement transducers with the 2AR adapter.

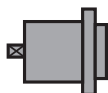
2) Tightening spindles



Code		4DMC060	4DMC160
Order no.			
Nominal torque	[Nm]	60	160
Reduction		1	
Avg. efficiency		1	
Installation Length	[mm]	122	
Weight	[kg]	1.6 kg	

- You can configure your tightening spindle with a redundant measurement transducer from the same type. Connect both measurement transducers with the 2AR adapter.

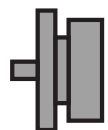
3) Redundant adapter



Code		4AR
Order no.		0608810022
Reduction		1
Avg. efficiency		1
Installation Length	[mm]	65
Weight	[kg]	0,8 kg

- When configuring with a redundant measurement transducer, the 2AR adapter connects both measurement transducers.

4) Adapter



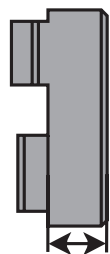
Code		4A
Order no.		0608810026
Reduction		1
Avg. efficiency		1
Installation Length	[mm]	26.5
Weight	[kg]	0.4 kg

- When configuring without a measurement transducer, the 2A adapter connects the output drive and the planetary gearbox.

Spindle Bearing

6 - 150 Nm ■ Size 4**5) Planetary gearbox**

Code		4GE19	4GE59
Order no.		0608720056	0608720040
Reduction		19.3	58.6
Avg. efficiency		0.9	0.85
Installation Length	[mm]	82.9	105.5
Weight	[kg]	0.7 kg	1,1 kg

6) Transverse gearbox

Code		4ULG
Order no.		0608PE0024
Reduction		1
Avg. efficiency		0.9
Installation Length	[mm]	41.3
Weight	[kg]	1,4 kg

• The 2ULG transverse gearbox shortens the length of your tightening spindle by the installation length of the EC motor plus the installation length of the transverse gearbox.

7) EC motor

Code		EC304
Order no.		0608701018
Installation Length	[mm]	269
Weight	[kg]	2.7 kg

Accessories**Tightening spindle with spindle bearing, offset output drive or angle head**

BG	(A)	
	Code	Order no.
BG 4	ML046	0608830222

Tightening spindle with spindle bearing, offset output drive or angle head and redundant measurement transducer

BG	(A)		(B)	
	Code	Order no.	Code	Order no.
BG 4	ML046	0608830222	MLR033	0608830174

Tightening spindle with transverse gearbox

BG	(A)	
	Code	Order no.
BG 4	ML046	0608830222

Spindle Bearing

6 - 150 Nm ■ Size 4**Tightening spindle with transverse gearbox and redundant measurement transducer**

BG	(A)		(B)	
	Code	Order no.	Code	Order no.
BG 4	ML046	0608830222	MLR033	0608830174

Connection cable straight – angle

Length A [mm]	Code	Order no.
3	SL003	0608830176
5	SL005	0608830177
7	SL007	0608830190
10	SL010	0608830178
15	SL015	0608830179
20	SL020	0608830180
0	SLF*	3608872160

Connection cable angle – angle

Length A [mm]	Code	Order no.
3	SLW003	0608830227
5	SLW005	0608830230
7	SLW007	0608830232
10	SLW010	0608830242
0	SLWF*	3608872170

Tightening spindle extension cable straight– straight

Length A [mm]	Code	Order no.
3	SV003	0608830188
5	SV005	0608830189
7	SV007	0608830247
10	SV010	0608830181
15	SV015	0608830182
20	SV020	0608830183
0	SVF*	3608872180

Spindle Bearing

6 - 150 Nm ■ Size 4**Tightening spindle extension cable angle –straight**

Length A [mm]	Code	Order no.
3	SVW003	0608830243
5	SVW005	0608830244
7	SVW007	0608830245
10	SVW010	0608830246
0	SVWF*	3608872190

Bosch Rexroth AG

Electric Drives and Controls

P.O. Box 13 57

97803 Lohr, Germany

Bgm.-Dr.-Nebel-Str. 2

97816 Lohr, Germany

Phone +49 9352-40-0

Fax +49 9352-40-4885

www.boschrexroth.com/electrics

The data specified above only serve to describe the product.

As our products are constantly being further developed, no statements concerning a certain condition or suitability for a certain application can be derived from our information. The information given does not release the user from the obligation of own judgment and verification. It must be remembered that our products are subject to a natural process of wear and aging.