

Technical Data

Dimensions	mm	Fig. 1 and 2
Assembly options		wall or flange assembly
Weight		
size 1, 10 or 15 kN	kg	17
size 2, 30 kN	kg	80
size 2, 60 kN	kg	87
Max. tool weight *		
size 1	kg	50
size 2	kg	100
Direction of measurement		tension/ compression
Measuring range		
size 1	kN	1, 2, 5, 10, 15
size 2	kN	15, 30, 60
Length of stroke		
size 1	mm	200
size 2	mm	400
Tool holder	mm	Fig. 1 and 2
Holding brake	V/A	24/1
Max. movement speed	mm/s	300
Displacement sensor system		absolute encoder
Resolution	mm	0,001
Force sensor		piezoelectric

* Possible radial forces must be considered independent of the mounting. Tool weight must be reduced using safety option in servo controller

Temperature range	°C	10 ... 40
Protection class		IP54
Linearity in all ranges	%FSO	≤1
Service life of spindle (acc. to defined drive profile)	cycles	approx. 10 million
Short stroke		
size 1	mm	≤60
size 2	mm	≤110
Lubrication connection (exterior)		standard- lubricating nipple

Servo Controller	Bosch-Rexroth Type IndraDrive	
Standard Interface**		Profibus
Control voltage	VDC/W	24 (19,2 ... 28,8) /24
Power connection	V	400 (400 ... 500) ±10 %
	Hz	50/60 ±2 %
	phase	3

Evaluation Unit	Type 4734A... or Type 4740A...	
Standard Interface		Profibus
Power supply	VDC	24 ±10 %

** Dependent of system

Comment about temperature:
According to the load profile the size 2 housing can heat up to 80 °C.
Cycle time <10 sec please contact technical service.

Dimensions

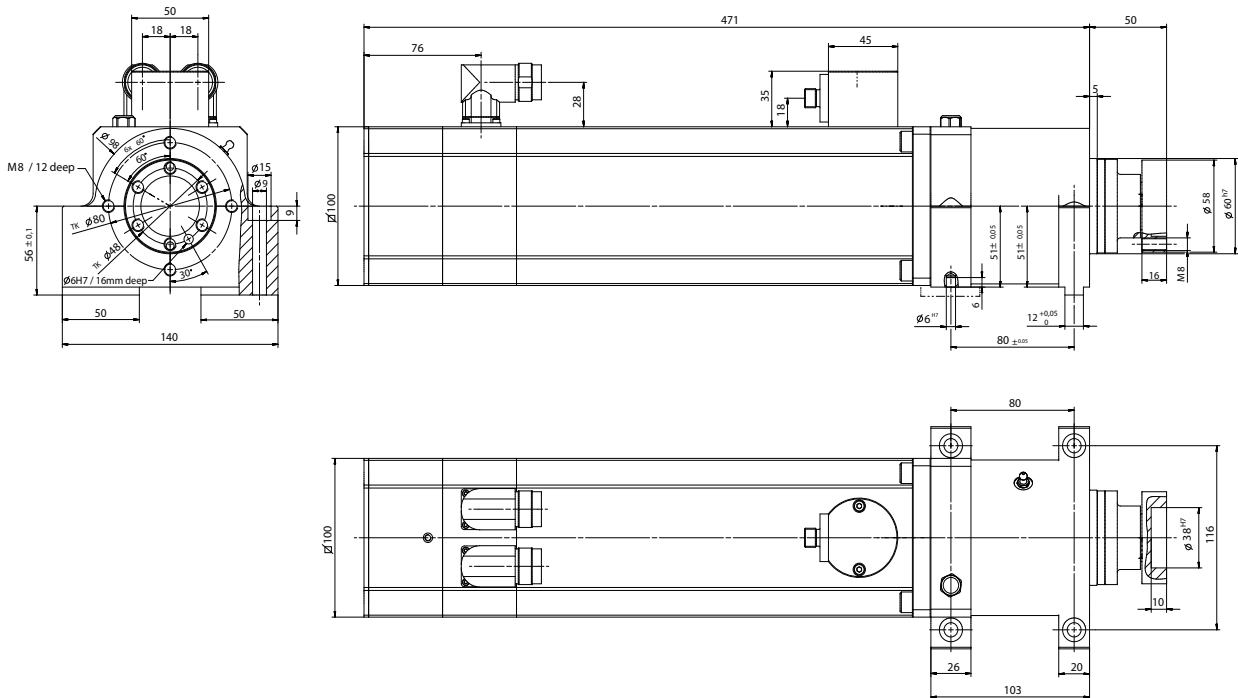


Fig. 1: Dimension NC joining module NCFH Type 2151B... size 1 for measuring range 1, 2, 5, 10 and 15 kN

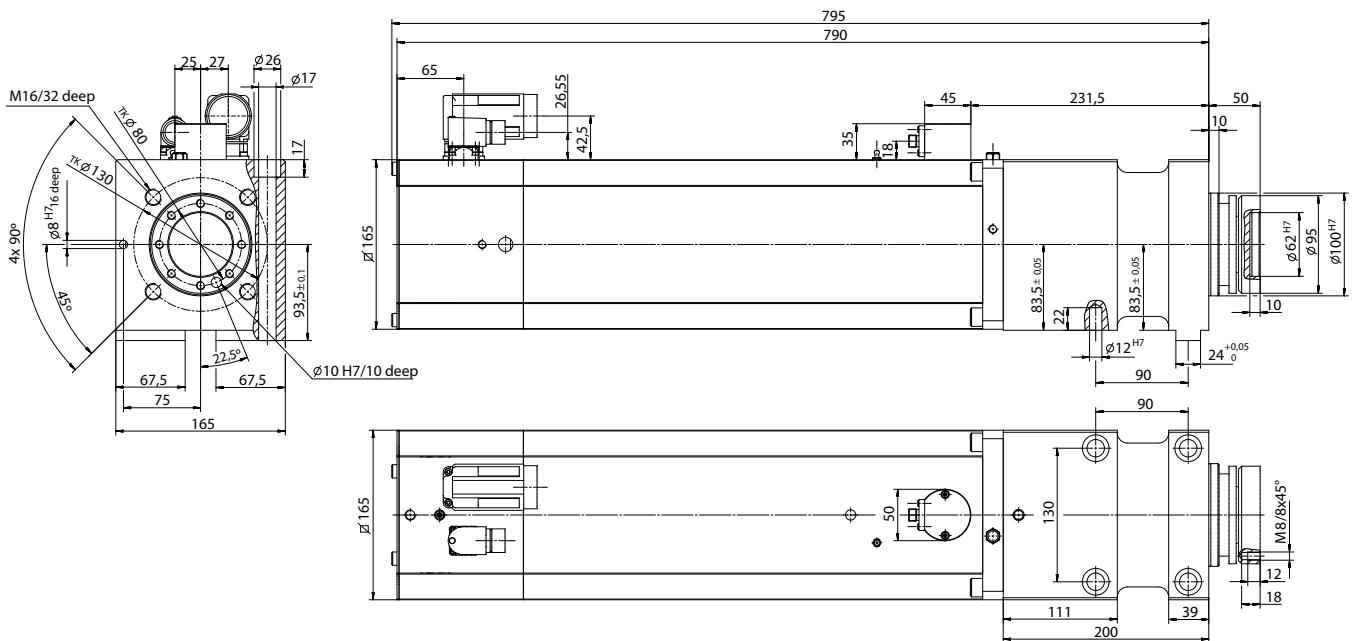


Fig. 2: Dimension NC joining module NCFH Type 2151B... size 2 for measuring range 15, 30 and 60 kN

Assembly may require an external guidance to the ram.
Radial forces such as tool weight must be observed.

2151B_000-690e-07.10