

# Freely directional "swivel" connection for wash gun

# Dyna Variacor®



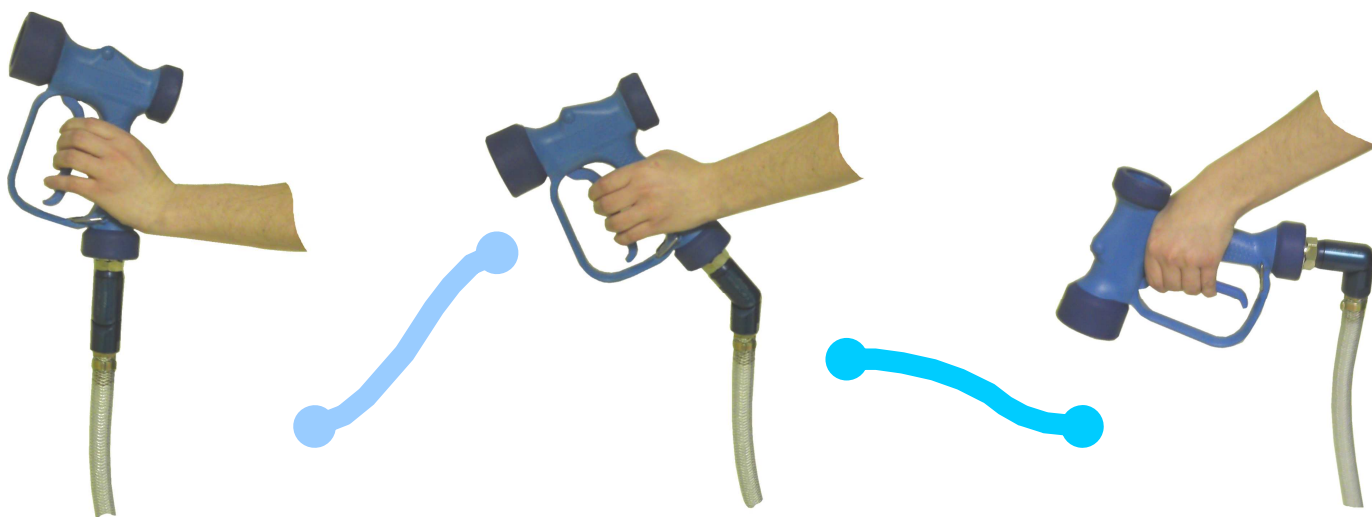
The internationally patented Variacor® system ensures that the wash gun feed pipe remains flexible and directional.

**Economy:** no more premature wear of the flexible feed pipe.

**Ease of use:** Less stress caused by the rigidity of the flexible pipe makes washing easier in places with difficult access.

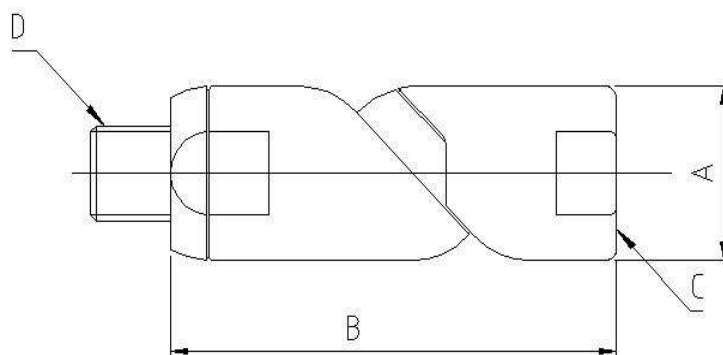
**Comfort:** No spiralling of the flexible pipe that is already in the ideal position.

**Long life:** Mechanical stainless steel components and aluminium body suitable for food processing.



Transit: Ø11mm  
 Weight: 123g. / 0.272lbs  
 Max. temperature: 90°C / 194°F  
 Max. pressure: 40 bar  
 Dimensions: (A) Ø 29.5 / (B) 82

Reference	DV11MFB12A	DV11MFN12A
Male (D)	BSP1/2	NPT1/2
Female (C)	BSP1/2	NPT1/2



The dimensions are given in mm as a guide and are subject to change.